



OFFICE OF THE PRINCIPAL N.S.S. COLLEGE

PANDALAM
(Accredited with 'B+' Grade by NAAC)
PATHANAMTHITTA (DIST)
KERALA STATE
Ph: 04734252221

Feedback Policy

Feedback is one of the most important and powerful influences on learning. For the inclusive growth of an institution, an effective feedback system from all the various stake holders is essential.

NSS College Pandalam recognizes this system as a means to measure the degree of success in meeting the objective of the course. The college goes a long way towards ensuring to meet the needs of our students, parents and other stake holders. It is a means of understanding and analyzing how effective the measures adopted by the college are and the immediate changes that need to be incorporated.

Feedback Collection Process from the Stakeholders

To get an overall idea on the syllabi of various courses offered by the university, the college maintains an institutional level feedback system. Every year, feedback on curriculum is collected from final year students as they have an overall idea of the curriculum. Feedback was collected from different stakeholders like students, teachers, parents and alumni.

Feedback is collected from the parents, during PTA meetings; from alumni during alumni meet; from the outgoing students on the completion of their course, and from the teachers, about the effectiveness of the course and the curriculum and the matters related to that. The course content and its depth, coverage, applicability, learning value, clarity and relevance are all thus evaluated.

Feedback Analysis

The data collected by the IQAC has been sorted and consolidated for drafting the analysis report. The analysis is done year wise as well as parameter wise. The aspects pointed out by all the

stakeholders are considered with special care and attention. The teachers discuss and evaluate the suggestions received from different spheres regarding the curriculum.

Follow Up

The suggestions are consolidated to communicate to the Board of Studies through the teachers who are members of various Boards of Studies and Syllabus Revision Committees, and those who participated in the Syllabus Revision Workshops conducted by the University.

N.S.S. COLLEGE, PANDALAM PATHANAMTHITTA



INSTITUTION EVALUATION BY STUDENTS

Department Programme (UG/PG)

Semester Year

A few criteria that describe various educational experiences in the institution are given below. Rate on a five point scale as shown below, your assessment of the performance of the institution. **Please indicate your rating by giving appropriate number (0 – 4) against each of the following items.**

0- Very low, 1- Below Average, 2- Average, 3- Above Average, 4- Very high

General Academic Atmosphere	<input type="text"/>
Library facilities	<input type="text"/>
Laboratory facilities	<input type="text"/>
Opportunities in the Physical Education Department	<input type="text"/>
Participation of students in college union activities	<input type="text"/>
Availability of teaching aids like OHP, DLP, LCD projector, etc in the department	<input type="text"/>
Teacher-Student relationship	<input type="text"/>
Helpfulness of Lab/Lib/Staff	<input type="text"/>
Opinion regarding the functioning of college office	<input type="text"/>
Chance for doing project works relating to environment, women's issue, etc in the department	<input type="text"/>
Your chances of getting admission to higher studies in the same discipline	<input type="text"/>
Conduct of invited lectures/seminars, etc. in the department	<input type="text"/>

Your opinion regarding the overall performance
of the department

How much would you recommend this institution
to other students

Any other remarks:

N.S.S. COLLEGE, PANDALAM



TEACHER EVALUATION BY STUDENTS

Department Programme (UG/PG) Semester Year

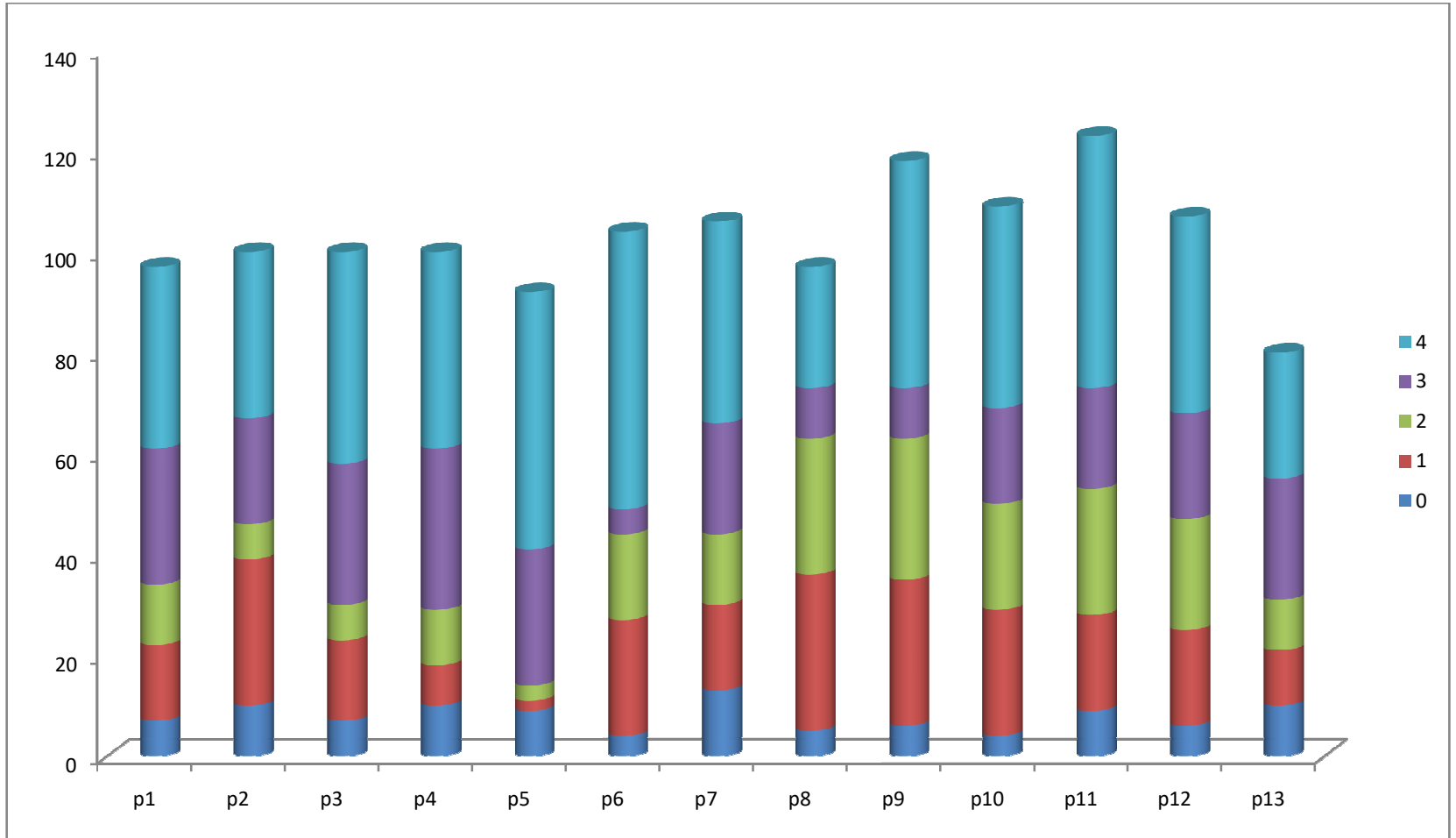
Indicate your rating by giving appropriate number (0 – 4) against each of the following items for evaluating your teacher.

0-Poor, 1- Below Average, 2- Average, 3-Good, 4- Excellent

Attributes	Teacher code/Name of teacher												
Communication Skills (in terms of articulation & comprehensibility)													
Interest generated by the teacher													
Ability to integrate course material with environment or other relevant issues to provide a broader perspective													
Ability to integrate course/draw upon other courses													
Accessibility of the teacher in and out of the class (includes availability of the teacher to motivate outside class discussion)													
Ability to design projects/assignments/ examinations/quizzes to test understanding of the course													
Provision of sufficient timely feedback													
Knowledge base of the teacher (as perceived by you)													
Sincerity/Commitment of the teacher													
Overall rating													
Any other remarks:													

Institution Evaluation

<i>Parameters</i>	4	3	2	1	0
General Academic Atmosphere	36	27	12	15	7
Library facilities	33	21	7	29	10
Laboratory facilities	42	28	7	16	7
Opportunities in the Physical Education Department	39	32	11	8	10
Participation of students in college union activities	51	27	3	2	9
Availability of teaching aids like OHP,DLP, LCD projector, etc in the department	55	5	17	23	4
Teacher-Student relationship	40	22	14	17	13
Opinion regarding the functioning of college office	24	10	27	31	5
Chance for doing project works relating to environment, women's issue, etc in the department	45	10	28	29	6
Your chances of getting admission to higher studies in the same discipline	40	19	21	25	4
Conduct of invited lectures/seminars, etc. in the College	50	20	25	19	9
Your opinion regarding the overall performance of the College	39	21	22	19	6
How much would you recommend this institution to other students	5	24	10	11	10



Teacher Evaluation by students

Sl.No	Parameters	4	3	2	1	0
1.	Communication Skills (in terms of articulation & comprehensibility)	36	32	40	5	7
2.	Interest generated by the teacher	15	51	45	11	13
3.	Ability to integrate course material with environment or other relevant issues to provide a broader perspective	21	28	44	13	11
4.	Ability to integrate course/draw upon other courses	22	31	40	18	15
5.	Accessibility of the teacher in and out of the class (includes availability of the teacher to motivate outside class discussion)	5	42	64	3	6
6.	Ability to design projects/assignments/ examinations/quizzes to test understanding of the course	20	64	53	14	2
7.	Provision of sufficient timely feedback	5	31	52	16	15
8.	Knowledge base of the teacher	4	48	77	1	4
9.	Sincerity/Commitment of the teacher	35	46	42	4	8
10.	Overall rating	19	50	48	2	15

Teacher Evaluation
n by
students

